

Numéro Du Style	5T509	
Collection	New Path	
Type De Produit	Dalles De Moquette	
Construction	Standard	Data + Performance
Type De Fabrication	ISO 2424	tufted 1/10" 39.4 per 10cm
Construction	ISO 2424	Tufté Structuré Bouclé à Motif
Méthode De Coloration	EN 994	100% Solution Teinte
Dimensions Du Produit	EN 994	50 cm x 50 cm 20 tiles (5 m²) per box
Sous-couche Primaire	ISO 2424	Pet Non-Woven
Sous-couche Secondaire	ISO 2424	Ecoworx S™ Polyolefin Plastomer
Fibre	ISO 2424	Eco Solution Q100™ Polyamide 6 Contient 100% De Contenu Recyclé
Epaisseur Du Velours	ISO 1765	5.5 mm
Épaisseur Du Velours Fini	ISO 1766	1.9 mm
Poids Total	ISO 8543	2272 g/m²
Poids Tufté	ISO 2424	640 g/m²
Poids Du Velours Utile	ISO 8543	236 g/m²
Densité Du Velours	ISO 8543	0.124 g/cm³



Points	ISO 1763	169,000/m² 43 per 10cm
Propension Electrostatique	ISO 6356	≤ 2.0 kv (Stroll Test)
Classification d'Utilisation	EN 1307	33 Commercial Heavy
Classification Luxe	EN 1307	LC1
Stabilité Dimensionnelle	EN 986	≤ 0.2%
Isolation Acoustique	ISO 10140	26 Db
Classification d'Absorption Sonore	ISO 354/11654	0.20 Aw Class E
Résistance Thermique m² K/w	ISO 8302	0.069 M² K/W Tog 0.69
Dry Slip Resistance	ISO 13893	Pass / No Pulled Loops
Résistance De La Couleur À La Lumière	ISO 105-B02	>6
Inflammabilité	EN 13501-1	Bfl-S1 (Adhered Testing)
Chaise À Roulette	EN 985	≥2.4 Continuous USE

The diagram shows five types of brickwork patterns, each represented by a grid of arrows indicating the orientation of bricks (up, down, left, right):

- Monolithic:** A 2x2 grid where all arrows point upwards.
- Quarter Turn:** A 2x2 grid where arrows point up, right, left, and up in sequence.
- Brick:** A pattern where the top row has two up arrows and the bottom row has three up arrows.
- Ashlar:** A pattern where the top row has two up arrows and the bottom row has three up arrows, with the middle arrow pointing left.
- Random:** A 2x2 grid where arrows point in various directions (up, right, left, down).



© 2024 Shaw Industries Group, Inc., a Berkshire Hathaway Company
May 17, 2024

<p>CE 22</p> <p>EU.DOP/2895/CPR/1222/0323/EST OOSTERHOUT SHOWROOM, VAARTWEG 10, 4905 BL NETHERLANDS (NLD) Notified Body 2895</p>	<p>UK CA 22</p> <p>UK.DOP/0338/CPR/1222/0323/EST SHAW EUROPE LIMITED BLACKADDIE RD, SANQUHAR DG4 6DB, UNITED KINGDOM Approved Body 0338</p>
--	---

Coordination Des Produits

Carpet Tile: **Positive Ecoworx S Tile, Poised Ecoworx S Tile**

Attributs + Certifications

Certifications Below Apply Exclusively To The Carpet Tile Rug Itself And Not The Lokworx Tabs Adhesive

Declaration of Performance	EU.DOP/2895/CPR/1222/0323/EST
Certification Cradle to Cradle™ (C2C)	Silver Level (Version 3.1)
Déclaration environnementale de produit (EPD)	Certifié Par Un Organisme Tiers Conformément Aux Normes ISO14044, ISO 14025 & EN15804
Embodied Carbon (Cradle to Gate)	4.14 kg CO ₂ /m ²
Life-Cycle Carbon Emissions	Carbon Neutral
garantie environnementale	Take Back Policy Offered For All Ecoworx S™ Products
pays d'origine	United Kingdom
BREEAM Contribution Credit	Certificate of Approval Schools/Offices/Health/Industrial Shed Retail

Well V2 Contribution Credit

X08 Hazardous Material Reduction Part 1: Limit Hazardous Materials Optimization	C2C Silver Level (Version 3.1)
X10 Volatile Compound Reduction Part 1 (A): Manage Volatile Organic Compounds (VOCs) Optimization	C2C Silver Level (Version 3.1)
X11 Long Term Emissions Control Part 2: Flooring Optimization	M1> Emissions Class For Building Material
X13 Enhanced Material Precaution Part 1: Select Optimized Materials Optimization	C2C Silver Level (Version 3.1)
X14 Material Transparency Part 1: Promote Ingredient Disclosure Optimization	C2C Silver Level (Version 3.1)

Contribution À La Certification Leed

MR Credit: Building Product Disclosure and Optimisation Material Ingredients - Option 1: Material Ingredient Reporting	C2C Silver Level (Version 3.1)
MR Credit: Building Product Disclosure and Optimisation Material Ingredients - Option 2: Material Ingredient Optimization	C2C Silver Level (Version 3.1)
"Crédit EQ : matériaux faibles émissions Option 1 : calculs par catégorie de produit"	Certified

Air Quality

Indoor Air Comfort Gold	Certified
M1	Certified

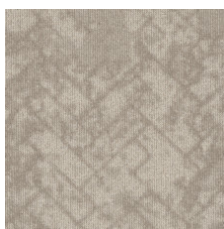
Memberships

WGBC Framework	WGBC Framework
UKGBC	UKGBC
Emirates Green Building Council	Emirates Green Building Council
Chemsec	Chemsec

Indice De Réflexion Lumineuse



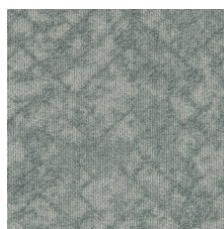
Bubbly 10100
LRV 30.8



Warmth 10101
LRV 33.3



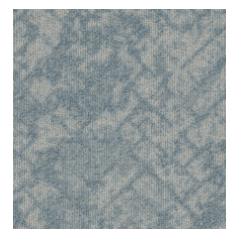
Optimistic 10210
LRV 24.6



Considered 10327
LRV 29.2



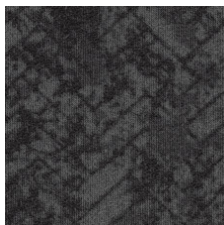
Observe 10375
LRV 8.8



Enthusiasm 10411
LRV 30.1



Confident 10480
LRV 10.3



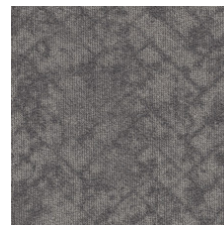
Contemplate 10500
LRV 5.9



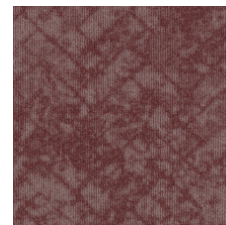
Satisfied 10515
LRV 16.4



Solace 10580
LRV 13.9



Grateful 10760
LRV 14



Cheeky 10870
LRV 11.9

Informations Supplémentaires

**Manufactured in ISO 9001 certified facility. Meets or exceeds all local and national regulations in country of manufacture.

Installation Guidelines

Maintenance Guidelines

lifetime commercial limited

Specifications are subject to nominal manufacturing variance. Material supply and/or manufacturing processes may necessitate changes without notice.

This product is an exclusive design and may not be duplicated in any manner. Use of this design in the creation of another product design is also strictly prohibited.

Visit shawcontract.com/testing for more information.



Corporate Headquarters +1 800 257 7429 | +1 706 532 7984 | Atlanta +1 404 853 7429 | Bengaluru +91 80 6773 0202 | Beijing +86 10 6568 588 | Chicago +1 312 467 1331 | Dubai +971 4 584 6956 | Hong Kong +852 2623 0371 | Latin America (Miami) +1 305 827 5912 | London +44 207 961 4120 | Los Angeles +1 800 233 1614 | Melbourne +61 3 9939 8543 | Mexico City +55 5010 7600 | Mumbai +91 22 6284 5050 | Nantong +86 400 800 7429 | New York +1 212 953 7429 | Paris +33 (0) 1 81 22 44 39 | San Francisco +1 415 955 1920 | Santiago +562 2431 5000 x 550 | São Paulo +55 11 3071 1702 | Shanghai +86 21 3338 4000 | Singapore +65 6733 1811 | Sydney +1 800 556 302

© 2024 Shaw Industries Group, Inc., a Berkshire Hathaway Company
May 17, 2024

3 of 3